

WHO IS A CLOSE CONTACT OF COVID-19 AT SCHOOL?

CLOSE CONTACT OF A POSITIVE CASE (high-risk exposure)

You were within a 2 metres distance for more than 15 minutes within 24 hours.



Someone in your class, on your school bus or in your after school cohort.



You had close physical contact with the person, such as a hug for more than 15 minutes within 24 hours.



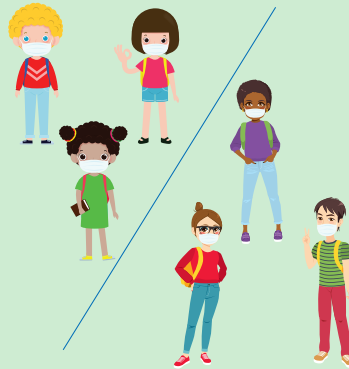
A person accidentally sneezed, or coughed on you while talking in close proximity.

NOT A CLOSE CONTACT OF A POSITIVE CASE (low-risk exposure)

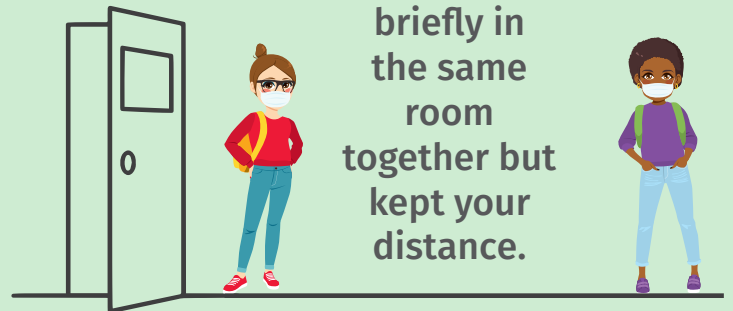
You maintained a 2 metres distance.



Goes to the same school, but is not in the same cohort.



You were briefly in the same room together but kept your distance.



You passed a person quickly in the hall, or at recess.

